

# The Echo

News from the Pleasant Valley Historical Society

## Meet the 2015 Dons and Doñas



*Pictured from left to right: Joan Carole Olsen, Jeanne Adams, Richard Lee, Jr., Geoff Dean, Ada Lee Sullivan, Tom FitzGerald, Kevin Nunn, Lynn Jones, Craig Underwood, Hillary Ling.*

**Doña Jeanne Adams** has been a long time educator, teaching and serving as an administrator in local school districts. After receiving her Ph.D from the University of California in Santa Barbara, she began her teaching career in the Pleasant Valley School District. She later taught in the Oxnard School District and, as Assistant Superintendent there, she developed their Year-Round School Program. Forty years later, she returned to the Pleasant Valley District to help open El Rancho School as the University Prep School at CSUCI, a training facility for student teachers. She is part of the Core Doctoral Faculty at CSUN and is on six non-profit boards. She has received numerous honors from various organizations.

**Don Geoff Dean** is in his 19th year as Sheriff of Ventura County and a 37 year veteran of the department. Before being elected Sheriff, he worked various assignments, including commanding the SWAT Team, Chief of Police for the City of Moorpark and overseeing three of the Sheriff's four divisions. He was raised in Simi Valley and he and his wife have lived in Camarillo for 22 years. He is active in the Camarillo Noon Time Rotary, is on the Board of Directors for Casa Pacifica, the American Cancer Society's Community Council and the Boy Scouts of America.

**Don Tom FitzGerald** is the great-grandson of Adolfo and Isabella Camarillo. He graduated from Rio Mesa High School in 1977, went on to Fresno State University where he received his B.S. in Agricultural Science. He earned a teaching credential in Biological Science from California Lutheran University and returned to Rio Mesa, where he has taught biology for 25 years.

**Doña Lynn Jones** has major roots in Camarillo. She is fourth generation Camarillian; her mother and aunt, grandmother and great grandfather also called Camarillo home. She and her husband have hosted 40 youth camps during their marriage and have been Senior Pastors for two churches. She has worked for the Camarillo Health Care District as a Community Outreach Manager for 13 years. She was named the 2015 Public Servant of the year. She is Chairman of the Ventura County Adult Abuse Council, a Camarillo Chamber Ambassador and a Somis Thursday Club member. She is also a published author, artist and has had stories and quotes in two magazines.

**Don Richard Lee, Jr.** is a member of "The Greatest Generation." He was a World War II pilot with the Army, flying over the China-Burma-India area that was nicknamed "The Hump." He served 26 years in the Air Force and retired as a Chief Master Sergeant. He has been involved in community, county and state activities for many years. He has been a veterans advocate, serving on the Veteran Memorial Committee, the Ventura County Veterans Employment Committee and volunteering at the Ventura Veterans Home. A member of the American Legion, he has served at the National, State and local levels. He has also been an ardent supporter of youth sports.

**Don Hillary Ling** was born in China and moved with his parents to Malaysia when he was 6. He completed high school there and began his university studies in Tennessee in 1961. He received his bachelor degree from Peabody College of Vanderbilt and his DDS from the University of Tennessee. He and his wife moved to Camarillo in 1970 and he went into dental practice with Dr. Henry Reitz, who was the city's first dentist. In retirement, he has been volunteering and providing support for many organizations including the Boys and Girls Club, the Health District, Studio Channel Islands Arts, United Methodist Church, Pleasant Valley Lions and others.

**Don Kevin Nunn** started working for his dad at Camarillo Plumbing when he was in second grade. When he finished high school, he completed the Contractors Assn. Journeyman Plumber training in four years. While in the plumbing business, he served on the Camarillo Chamber of Commerce Board of Directors, the City's Redevelopment Committee and was the Camarillo Business Man of the Year in 1985. He has been a member of Rotary since 2005. He has been a member of Soka Gakkai International, the World Peace Buddhist Organization since 1986.

**Doña Joan Carole Olsen** moved with her family to California in 1955. She graduated from Oxnard College and went on to train as an electronic technician, skills she used working for Rocketdyne and the Pacific Missile Test Center at Point Mugu. Her list of community involvement is extensive and includes Habitat for Humanity, Camarillo Quilters Assn, Camarillo United Methodist Church, Elderhostel Service Projects, Campfire Girls leader, Cabrillo Music Theatre and sewing projects for the Los Altos Band, Camarillo Ranch docents, Rain Project quilts and clothes and quilts for Habitat families and more.

**Doña Ada Lee Sullivan** moved to Camarillo in 1986. A widow with two small children, she worked as a book-keeper in the day and completed her education at night, graduating from California Lutheran University with an accounting degree. She put this to good use as owner of a CPA practice here. She has been an integral part of the establishment of CAPE, Camarillo Academy of Progressive Education and served on their Board of Directors for 6 years. She has been president and is an active member in the Camarillo Noontime Optimist Club and is proud of their goal of helping the youth of our community.

**Don Craig Underwood** is a fourth generation Californian. He farms over 3,000 acres with a wide variety of crops and trees. The Underwoods were one of the original farmers at the Saturday Camarillo Farmers Market and now have added the Wednesday Market here. He is a true steward of the land using the best farming practices.



## PRESIDENT'S MESSAGE

It's been a good summer, and a busy one. We have had a string of successful events since May - Living History Day, our Annual meeting, the 2nd Speaker Series and the recent Dons & Doñas BBQ. It's been a good season.

A big thank you to Joy Todd, David Hibbits, Betty Sullivan and Barbara Wagner for their good work in planning and organizing the annual BBQ and 50th year celebration for the Dons & Doñas. Thanks also to Burt Misevic for the photography, Ken Eastman for designing the placemats, David Bratz and many others who served at the event, and special thanks for the team of Bill and Raelene Manzer who have worked for months managing the Don & Doña selection process. The complete updated list of Dons & Doñas is posted at [www.pvhsonline.org](http://www.pvhsonline.org). We are happy to have new shelving in the gift store to provide better display of gift items, such as historic photographs and PVHS coasters (like those given to the Dons & Doñas at the BBQ).

A significant opportunity for the Museum has been the internship of a graduate student from Claremont/Pomona College who is working on his Masters degree in Library Archives and Preservation. He has been the impetus behind new processes and access possibilities for our Museum. The internship has been so successful that he has been extended until February 2016 and will be coming back from school each week to work with our archives.

Should our Museum hours be so limited? Many people tell me that they want to see it, but never see it open. We are looking for more volunteers to be docents, so we can be open on a weekday.

One of our Goals this year is to develop an oral history program. If you would like to make a voice recording of your family history in this Pleasant Valley, or help with this program, please let me know.

Our core Mission is to serve the community by preserving and presenting the history of the Pleasant Valley area. We do this by maintaining the Museum, the Botanical Garden and honoring our Dons & Doñas. What is the right size for our Museum? We have a committee exploring the question of possibly expanding or changing our current facility. What is needed, possible, affordable, feasible? We have hopes, but we don't want to "out run our headlights". The Botanical Garden is a hidden treasure and paying for the landscaping and water is our greatest expense. We appreciate your continuing membership and donations to help keep it looking good.

Max Copenhagen

### **2015 Dons and Doñas, *Continued from Page 2***

For farming sustainability, he uses crop rotation, beneficial insects, cover crops, compost, computerized water sensors and drip irrigation for water conservation. He has served, often as president, on many boards and committees over the years, among them the County Fair Board, Zone Water Company, Mesa Union School Board and others. When the Las Posas Valley was threatened with major commercial development, Craig spent a year preparing and speaking before the Board of Supervisors, who ultimately agreed to protect this prime agricultural land.



## Our County Fair Window

If you attend the County Fair this summer, hopefully you visited the Ag Building and saw the Window Displays entered by the various non-profit groups that are charged with preserving the County's history.

Imagine our delight when we found that, among all the outstanding displays, ours had won the blue ribbon. The judges gave the display all the possible points for creativity, originality of presentation and educational value.

Many items were from a private collection; others were from the museum. Together, they brought the history of the 'County Fair with Ocean Air' alive. Historic sheet music was framed and actual fair ribbons from the 1920s were exhibited on items representing such divisions as Livestock, Agriculture and Home Economics. Barbara Wetherell made all the labels for the display and the judges commented on the "great labeling." Dave Bratz did the lighting with the help of Bert Misevic's lights from last year. The judges also commented on the good lighting. Bill and Joy Todd worked on the actual building of the display and the theme presentation.

## MEMORIALS

Fred Phipps and Cathy Trainer made donations in memory of **Anne Thomas, Marguerite Daubert, Betty Powell, Bill Kohagen, Bill Visser, Tina Sanchez, Dr. Jerry Clark, Janice Jean (Rush) Liebnaue, Frank White, Rev. Craig Le Breton.**

Annette Resnik-Bulen gave in memory of **Stephen Resnik.**

The Robert Coultas family contributed in memory of **Betty Powell.**

Donations in memory of **Tina Sanchez** were made by Donna Thwing, Margaret Leonard, Mary Lou Ashe, Raelene and Bill Manzer, Paul and Grace Martinez, Michael Andonian.

Pat Wise and Stan and Liz Daily contributed in memory of **Raquel Latham and Tina Sanchez**

## CONGRATULATIONS

Fred Phipps and Cathy Trainer donated in honor of **Pat Craig, Raelene Manzer and Dr. Bruce Colell**, recent inductees to the Ventura County Educators Hall of Fame.

Bev and Charles Yaeger, Jr. gave to celebrate the wedding of **Kathleen Terrill-Fox and William Montgomery.**



## WHAT IS HAPPENING AT THE MUSEUM

### DONATIONS WANTED

We are always looking for items and books related the Pleasant Valley area (Camarillo, Somis, Santa Rosa Valley). If you have any items you would be willing to donate, please bring them to the Museum any Saturday or Sunday between 12 noon and 4 p.m. or call the Museum and leave a message so we can make other arrangements. The number is 482-3660.

We would appreciate a brief history of the items donated. Example: This belonged to my grandmother, Mary Jones, who came to this area in the early 1900s from Kansas. She used these items in her quilting.

### MUSEUM DISPLAYS

Somis and surrounds are featured in new exhibits at the museum. With local farming families, the Somis School, stores, clubs and streets, it presents a fascinating background in the development of the Pleasant Valley. Also in the private collections cabinets, you will enjoy seeing the unusual display of hedgehogs.

### DOCENTS

The best way to increase your knowledge of the Pleasant Valley is to teach others while guiding visitors in the Museum. Lots of new opportunities are coming into being with the reorganization of the Museum's archives. A new card system is located in the historic "card catalog" section of the Museum. We need help reorganizing by subject and making duplicate subject cards. Our archives are full of delightful glimpses into local life and history. Please come and share a bit of your time. Personal basic training is provided. Contact Joy Todd.

### MEMBERSHIPS

Operating funds for the Museum and the Honn Botanical Garden are mostly generated through supportive memberships. Thank you for joining and now invite a friend.

### DINING OUT

Our dine out nights have proven to be so successful that we are, for the first time, inviting you to join us for a mini-trip around the globe, starting in October with a visit to Thailand, in November to Italy and in December back to the good old USA.

#### THE PLEASANT VALLEY HISTORICAL SOCIETY AND MUSEUM

Invites you to dine out at



**On October 13, 11 a.m. to 9:30 p.m.**

2500 Las Posas Rd., Suite D

You must present this coupon to your server in order for the Society to be given credit.

On Tuesday, October 13, we will dine at the Little Thai Restaurant, 2500 Las Posas Road, Suite D. Their hours are 11:00 a.m. to 9:30 p.m. Use the coupon on the left.

On Tuesday, November 3, we will be at Ottavio's Restaurant, 1620 Ventura Blvd. Their hours are 11 a.m to 9 p.m. Please note: Early Bird specials will not earn the Society any funds. Coupon on Page 8.

On Tuesday, December 1, we will be back in America at Marie Callender's Restaurant, 185 Daily Drive, from 7 a.m. to 10 p.m. Coupon on Page 8.

Clip these coupons and have them ready for use. The restaurants will not give the Society credit without a coupon.

*Betty Jo McDonald, Garden Chair*

Proposal for Removing the Lawn and Creating a butterfly garden and an Educational Area:

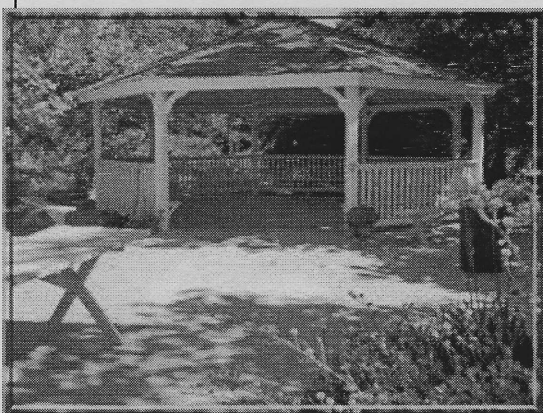
Water conservation is on everyone's mind—I see plenty of dead lawns in my neighborhood, and some of my friends are telling me that they no longer take daily showers. We have taken our water supply for granted for a long time.

Our garden maintenance chief, Green Heart Gardens' Marie Jasina and I have worked to reduce water use in the Museum garden. I have a proposal to reduce the water use more and to create an educational center in the garden in place of the lawn. The new plan would remove the water thirsty lawn, increase the size of the border of flowering plants to attract more butterflies, native pollinators and birds. Dr. Gordon Frankie will give us some of the plants for this area and I will apply for a grant from the resource center. If you get sentimental about the lawn or think that it is useful for events, it helps to realize that this lawn is not level or flat so it not useful for setting up for an event.

The existing flat area, which is surrounded on two sides by the trellis, would contain the educational area. I saw beautiful, interesting and informative educational plaques at a rest stop near Camp Roberts on the Southbound 101, which I think would be a great addition to our garden. I have photos of the plaques and the way they are mounted which I will add to our Facebook page.

These plaques detailed the history of that particular area. Ours could include information about the local indigenous people, the Spanish explorers and Missions, the early farmers, the Base, current farming, one detailing the “making of a city” and the native flora and fauna. The plaques are on metal and mounted on stands on a rock faced wall. They are permanent and clearly made not to fade. I have the name of the designer (who is actually from another state!). I am sure I can get some information from him about the manufacturer.

I will be presenting a proposal to the board regarding the following expenses: removing the lawn, changing the irrigation to drip line; planting an expanded border of ecological plants and creating a level area with a material other than grass. It will take me a bit longer to get together the information regarding the expense of developing the educational material.



I would like to create crowd funding for this project. I would ask for money but also for professional help: writers, photographers, researchers, and just plain labor. I propose paying to remove the lawn and prepare the soil, but perhaps those of you with gardening experience could assist with planting the expanded border.

I looked up the Camp Roberts Rest stop on the Internet—it has great reviews and 27 pictures but more of the toilets than the educational plaques! I will need help adding the pictures I have to the facebook page. There is nothing like this educational resource in Camarillo. We can “make” some history by contributing a beautiful educational display.

If you would like to be part of this project or wish to comment, email Betty Jo at [bjolandscapes@gmail.com](mailto:bjolandscapes@gmail.com).



## Board of Directors 2015-2016

Max Copenhagen, *President*

Bill Todd, *Vice President*

Bob Rust, *Treasurer*

Bob Burrow, *Recording Secretary*

Barbara Wagner, *Corresponding Secretary*

Hon. Stan Daily, *Parliamentarian*

Ken Eastman, *Member at Large*

Ira Grooms, *Member at Large*

Frank Roth, *Immediate Past President*

Jeanne Adams

David Bratz

Liz Daily

Ted Daniel

Terry DeWolfe

Gail DeWolfe

David Hibbits

Dr. Renee Whitlock Higgins

Bill Manzer

Raelene Manzer

Ron McCown

Betty Jo McDonald

Bill Milligan

Roger Putnam

Patricia Roth

Betty Sullivan

Valerie Tackett

Joy Todd

### Committee Chairs for 2015-2016

Accessions, Display, Cleaning: *Liz Daily, Joy Todd*; Annual Meeting: *Renee Higgins*; Facilities, Grants: *David Hibbit*; Finance/Budget: *Bob Rust*; Fundraising: *Stan Daily*; Don and Doña Barbeque: *Dave Hibbits, Joy Todd*; Docents, Membership: *Bill Todd*; Don and Doña Selection Committee: *Bill and Raelene Manzer*; Gazebo Events: *Valerie Tackett*; Gift Shop: *Doris Fournier*; Policies: *Jeanne Adams*; Garden: *Betty Jo MacDonald*; Newsletter: *Betty Sullivan*; Nominating Committee: *Frank Roth*; Publicity: *Barbara Wagner*; Sunshine, Living History Day: *Pat Roth*; Site: *Ron McCown*; IT: *Max Copenhagen*; Scholarship: *Stan and Liz Daily*; Signage: *David Bratz*; Speakers Series: *Bob Burrow*.

#### THE PLEASANT VALLEY HISTORICAL SOCIETY AND MUSEUM

Invites you to

DINE OUT AT



Tuesday, November 3, 11 a.m. to 9 p.m.

1620 Ventura Blvd.

You must present this coupon to your server in order  
for the Society to be given credit.

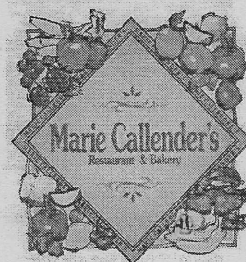
Not valid on "Early Bird" specials

#### THE PLEASANT VALLEY HISTORICAL SOCIETY AND MUSEUM

Invites you to

DINE OUT AT

Marie Callender's  
Restaurant & Bakery



On Tuesday,

December 1,  
From 7 a.m. to  
10 p.m.

185 Daily Dr.

You must present this coupon to your server in  
order for the Society to be given credit.