



WHY NOW?

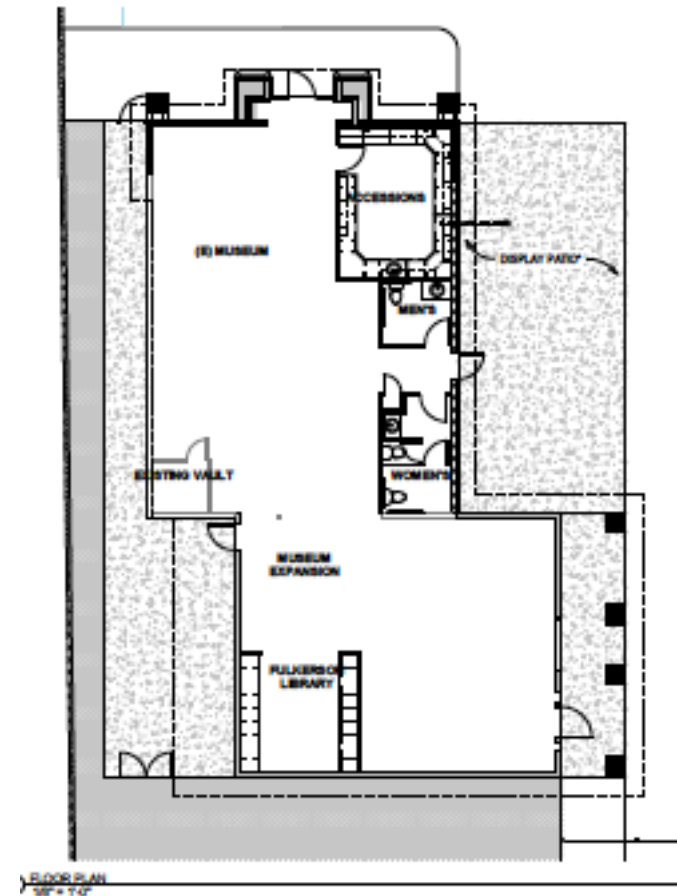
The “past” is not what it used to be...1900 and earlier. Today the “past” refers to the entire 20th century! The museum has grown to include the history of the living as well as the “forefathers.” We had been able to offer special children’s programs as well as our Speaker Series, but no longer have room for those programs. We have been asked to provide programs for schools, in both history and science. Space for those programs is critical to sharing history. Our planned expansion will double the size of our display/meeting area by approximately 1,400 sq. ft. Also, the present building will

be renovated/retrofitted. The outside will reflect the craftsman style of the early Pleasant Valley and will include a landmark tower to increase visibility from Las Posas Road. A larger museum will provide:

- Classroom space for interactive school programs and field trips
- Protection/storage for our collections
- A dedicated space for The Fulkerson Library
- Improved parking and accessibility
- Exterior donor wall and bulletin board

***APPROXIMATE AMOUNT
TO COMPLETE THIS PROJECT
= \$1.25 MILLION***

OUR PLANS



- *The Charles Honn Botanical Garden will stay the same to preserve a native habitat within the city.*
- *The Lisa Kelly mural will be preserved on the east wall.*
- *The front elevation will be redesigned and still face Las Posas Road.*